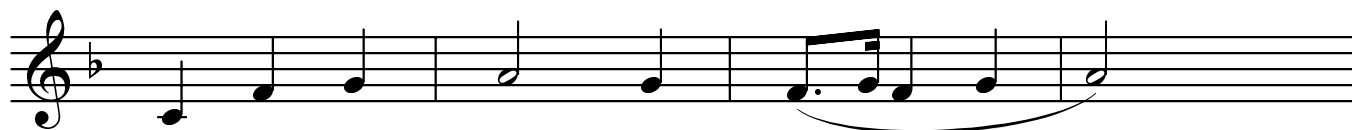


Holy Wednesday Bridegroom Orthros – First Kathisma, Tone 3

Special Melody: Awed by the beauty



The har - lot came to thee,



pour - ing out on thy feet



myrrh-oils, ad - mixed with tears,



O thou, the Friend of man,



and was ran - somed at thy com - mand from



the foul - ness of her e - vil.

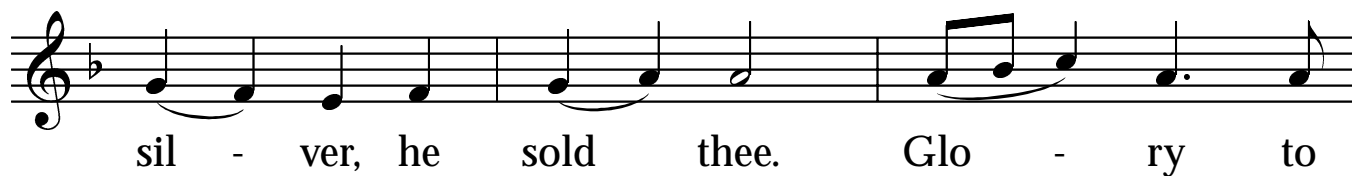
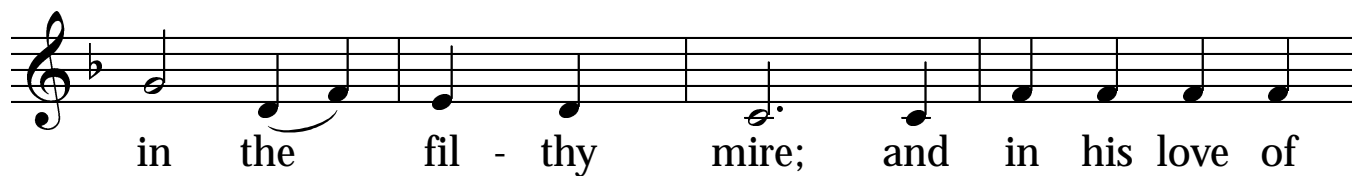
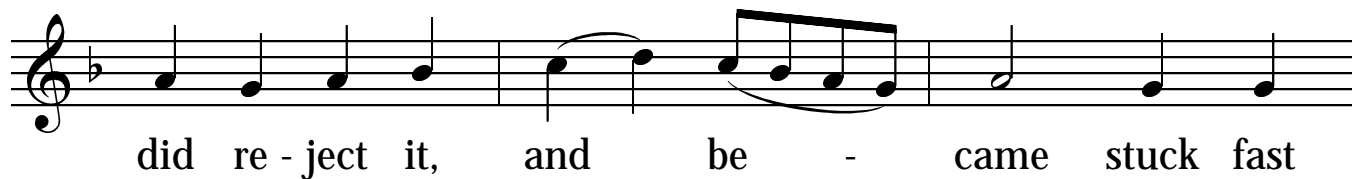


But he who did breathe thy grace, thine un -



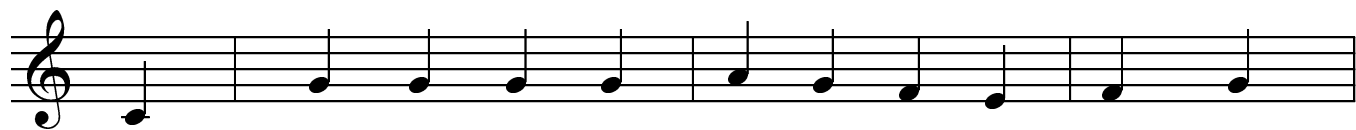
grate - ful dis - ci - - - - ple,

Holy Wednesday Bridegroom Orthros – First Kathisma (page 2)



Holy Wednesday Bridegroom Orthros – Second Kathisma, Tone 4

Special Melody: Be quick to anticipate



Con - sumed by love of sil - ver, Ju - das, in his



wi - ly de - ceit doth move to be-tray thee, O Lord, who



art the Trea - sure of life; in cun - ning doth



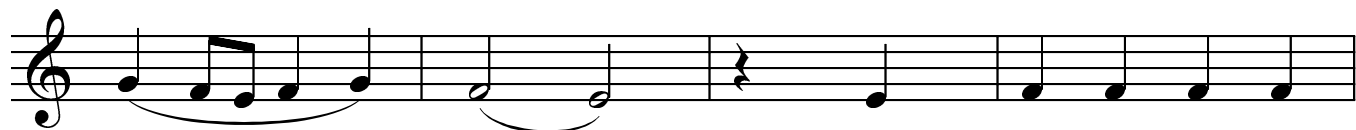
he set out. Where-fore, in his great fol -



ly, to the Jews doth he hast-en, speak - ing un -



to the law - - less, say - ing, "What will you



pay me, and I will be - tray



him to you, that he be cru - ci - fied?"

Holy Wednesday Bridegroom Orthros – Third Kathisma, Tone 1

Special Melody: The soldiers standing guard



The har - lot in her grief cried to



thee who hast mer - cy, and with great



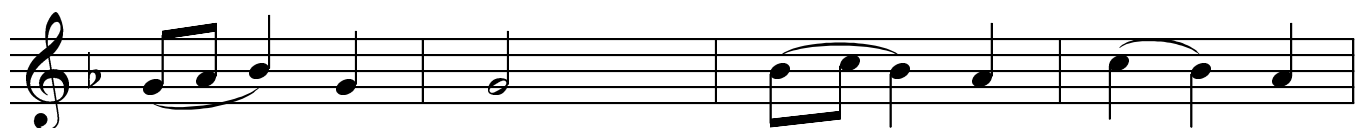
fer - vor did she wipe dry thy most



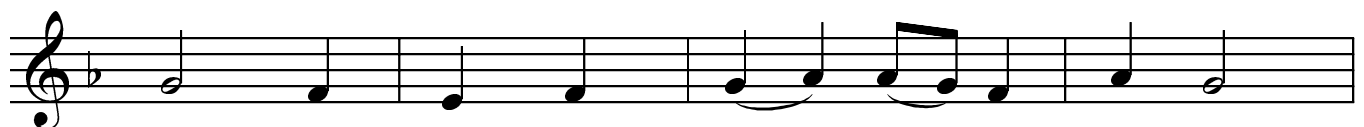
pure feet with the hair of her



head, and sighed from the depths of her



in - ward parts: "Do not cast me

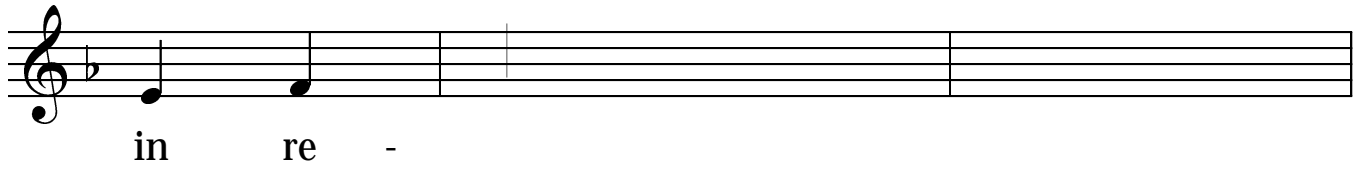


out, O my God, do not ab - hor me;



but do thou re - ceive me

This musical staff features a treble clef and a key signature of one flat (B-flat). The melody consists of the following notes: a quarter note G4, a quarter note A4, a quarter note B-flat4, a quarter note C5, a quarter note B-flat4, a quarter note A4, a quarter note G4, a half note F4, and a quarter note E4. The lyrics are positioned below the notes: 'but' under G4, 'do' under A4, 'thou' under B-flat4, 're - ceive' under the F4-G4 half note, and 'me' under E4.



in re -

This musical staff features a treble clef and a key signature of one flat (B-flat). The melody consists of a quarter note G4, a quarter note A4, followed by a whole rest. The lyrics are positioned below the notes: 'in' under G4 and 're -' under A4.