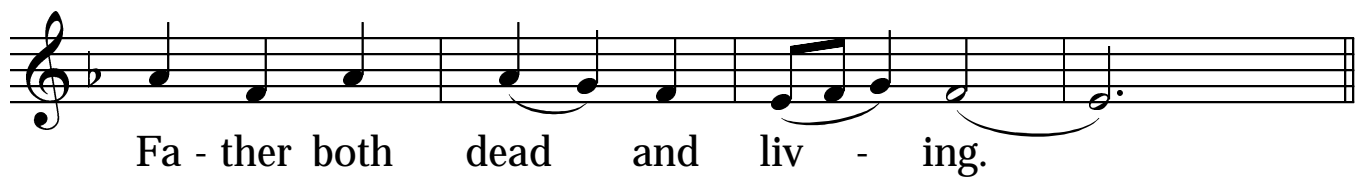
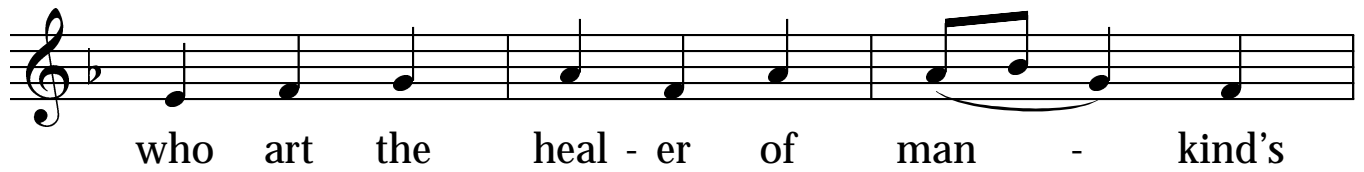
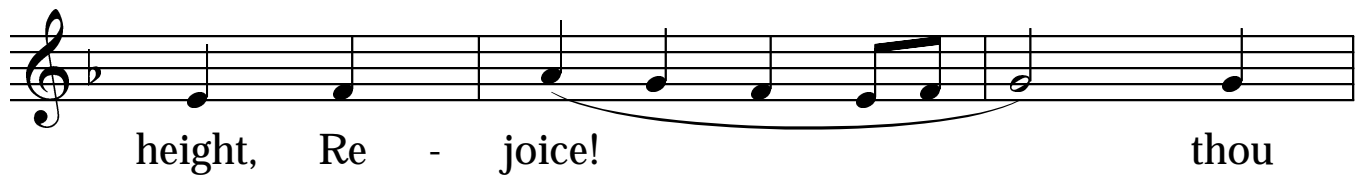
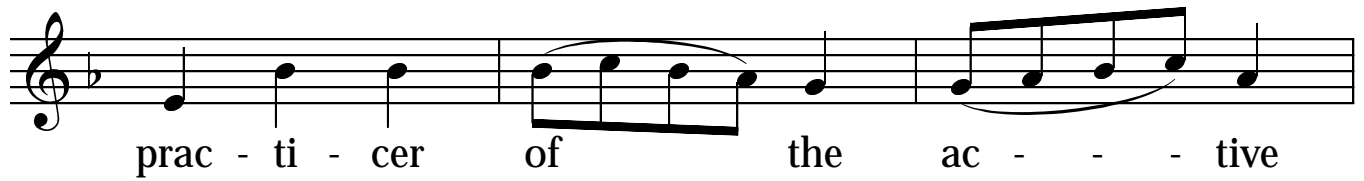


Exaposteilarion, Sunday of St Gregory Palamas

Special Melody: Upon that mount in Galilee

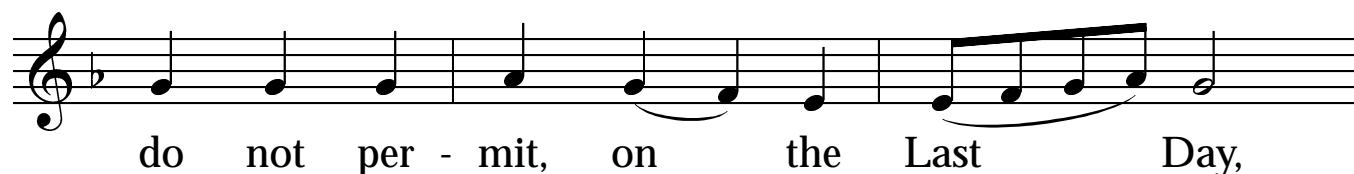
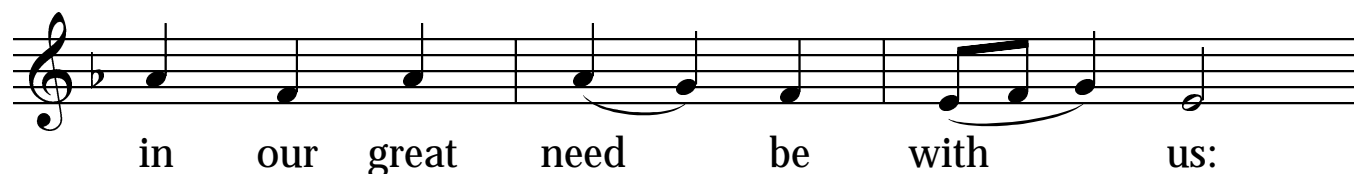
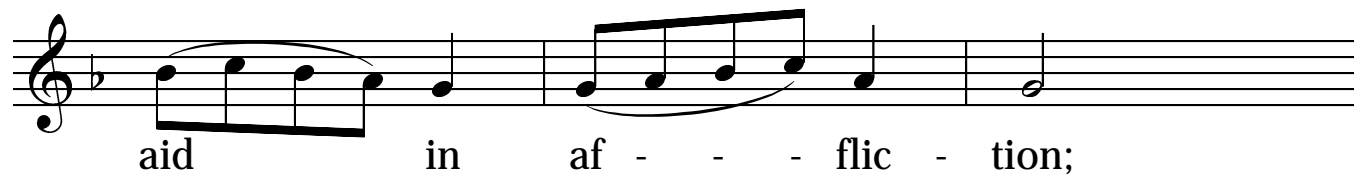
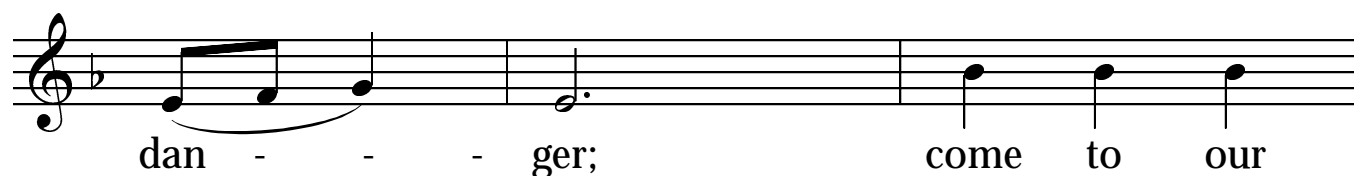
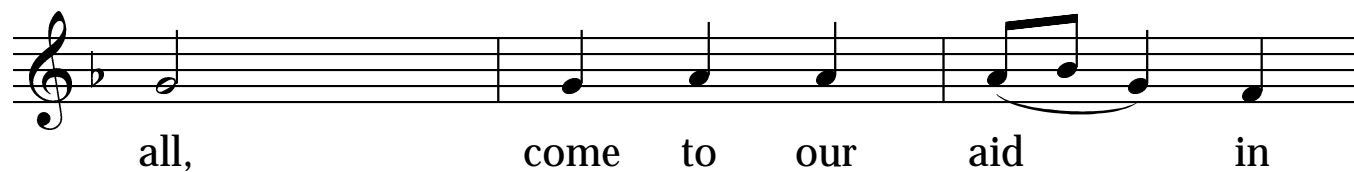
Re - joice, glo - ry of the Fa -
thers, mouth of the the - - o -
lo - - - gians, thou ta - ber -
na - - - cle of still - ness,
thou dwel - ling - place of wis - dom,
thou great - est height of the Tea - chers,
most pro - found sea of the Word;

Exaposteilarion, Sunday of St Gregory Palamas (continued)



Theotokion at the Exaposteilarion, Sunday of St Gregory Palamas

Special Melody: Upon that mount in Galilee



nor Ha - des, nor de - struc - - tion's

The first line of music is written on a single staff in G minor (one flat). It consists of seven measures. The first measure contains a quarter note G4. The second measure contains a quarter note A4. The third measure contains a quarter note Bb4. The fourth measure contains a quarter note C5, a quarter note Bb4, a quarter note A4, and a quarter note G4, all beamed together. The fifth measure contains a quarter note F4. The sixth measure contains a quarter note E4, a quarter note D4, a quarter note C4, and a quarter note B3, all beamed together. The seventh measure contains a quarter note A3. The lyrics are: "nor Ha - des, nor de - struc - - tion's".

The second line of music is written on a single staff in G minor (one flat). It begins with a treble clef and a key signature of one flat (Bb). The rest of the line is blank.